

THE WOODRUFF LIBRARY

Whats happening in May 2026

270 East Hayne St.
Woodruff, SC 29388
(864) 476-8770

Mon-Tues:
10am-8pm

Wed-Fri:
10am-6pm

Sat:
10am-4pm

Sun:
Closed

STORYTIME

Preschool Storytime
Wed • 11am



kanopy



LIBBY



SPARTANBURG COUNTY
PUBLIC LIBRARIES
www.spartanburglibraries.org



Adults:
Pilates
Every Wednesday
at 4pm



Adults:
Journaling Roundtable
Every 1st Monday
at 4:30pm



Adults:
Law Talk: Wills, Estates,
Probate
May 11 at 6pm



6-12:
Human Origins
May 5
at 4pm



Teen:
Teen Speed Puzzle
Challenge
May 14 at 4pm



Family:
Family LEGOs and More
May 18
at 4pm

Libraries Closed

All branches of the Spartanburg County Public Libraries will be closed Monday, May 25, 2026 for Memorial Day.

Early Voting at the Woodruff Library

Tuesday, May 26 through Friday, June 5.

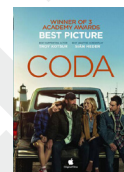
No voting on Saturday or Sunday.

Librarian's Note:

The Book Discussion Selection (on display during month of May) is *Anxious People* by Fredrik Backman.

The Book for the Book Discussion on May 6 is *The Lion Women of Tehran* by Marjan Kamali.

Movie Review Crew - May 13- *Children of a Lesser God* (1986) & *CODA* (2021)



May 2026

Events at Woodruff Library

Adults

Monday, 5/4
4:30pm
Journaling Round Table

Tuesdays in May
1pm
Adult Bingo Bash

Wednesday, 5/6
1pm
Woodruff Readers Book
Discussion

Monday, 5/11
6pm
Law Talk: Wills, Estates, and
Probate

Wednesday, 5/13
2pm
Movie Review Crew

Teens

Thursday, 5/7
4pm
Teen DIY: Birdhouses

Thursday, 5/14
4pm
Teen Speed Puzzle Challenge

Kids

Tuesday, 5/5
4pm
Exploring Human Origins: Kids
Play: Kids Summer "Olympics"

Monday, 5/18
4pm
Family LEGOs and More

Mixed Ages

Wednesdays in May
4pm
Pilates

\$2 per person, ages 12 and
up.

Woodruff Maker Lab

Woodruff's newest edition to its Maker Lab is the Epson Archival Scanner – capable of scanning professional large-format scans (12.2" x 17.2"), restore faded color, clarity and detail to old photos, scan multiple images at one time and save files to zip/flash drive.



Other available offerings and features of Woodruff Maker Lab include: basic sewing instruction, embroidery machine, Cricut, lamination equipment, Epson archival scanner, photos from your cellphone, buttons, stickers, and heat press items. Come utilize the equipment. It's here! Give us a call at 864-476-8770 for more information.